



## BROWSER AND SYSTEM REQUIREMENTS

### Minimum and Recommended System Requirements

To ensure that CSIU Student Information System performs seamlessly, please adhere to the requirements listed in the chart below:

	Minimum Requirements		Recommended Requirements	
	PC	Mac®	PC	Mac®
Operating System	Windows® XP Professional	Mac OS® (OS X) 10.4.11	Windows® 7 Professional	Mac OS® (OS X) 10.7
RAM	1924MB	1024MB	3072MB	3072MB
Resolution	1024x768	1024x768	1280x1024	1280x1024
Internet Browser	Internet Explorer® 7.0*	Safari™ 3.4**	Internet Explorer® 8.0 or 9.0*	Safari™ 5.1.5**

\*For users on Windows computers, **Internet Explorer 7** is supported; Internet Explorer 8 or 9 with "Compatibility Mode"  icon (located at the top of the screen) can also be used.

\*\*For Macintosh computers, only Safari 3.4 through Safari 5.1.5 are supported.

Your browser must also support secure web pages (SSL 128-bit encryption) and have Cookies and JavaScript enabled. CSIU Student Information System is optimized for best viewing with 16-bit color at 1024 x 768 resolution. These settings ensure that all pages display properly.

Recommended requirements are strongly recommended for Gradebook usage

### Software Requirements

CSIU Student Information System requires the use of the following third party applications:

Microsoft Office 2003, 2007, or 2010 (Word Excel, Access) and the latest version of Adobe Acrobat Reader

### Remote Access

The CSIU Student Information System is accessible from **any location**, assuming an Internet connection is available and browser requirements have been met. No special hardware is required to allow users to access the system from school or home.

## NETWORK PLANNING

The CSIU Student Information System Student Management System utilizes a true eService or Software-as-a-Service (SaaS) delivery model. Because the system is hosted by CSIU, there are no local server requirements and school districts are not responsible for server maintenance, running backups, and applying software upgrades. The following guidelines are offered to assist in capacity planning.



## Network Requirements

CSIU Student Information System requires high-speed internet connections from each site/building to the internet. It is recommended that a minimum capacity of 100MB Ethernet network supporting TCP/IP protocol be in place.

Technical support staff will need to make sure that these firewall TCP ports are open for outgoing traffic: 80, 433, 8080, 5184, and 8686.

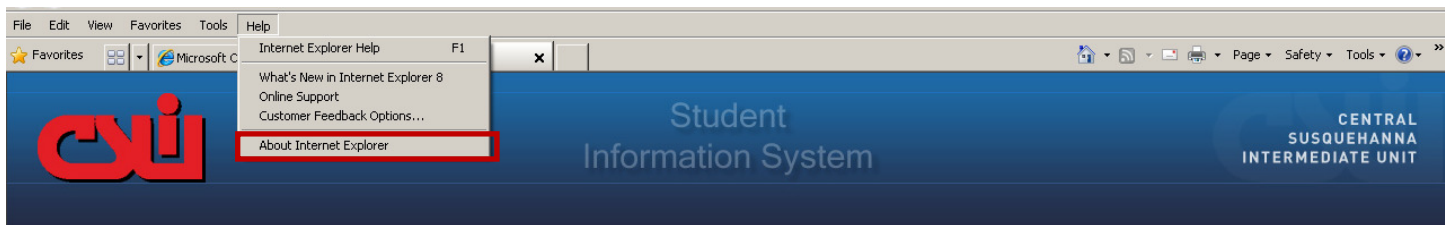
Additionally, filtering appliances and software rules must allow web servers located at CSIU (204.186.159.x) to pass all network traffic through without delay or caching.

Each workstation must have internet access.

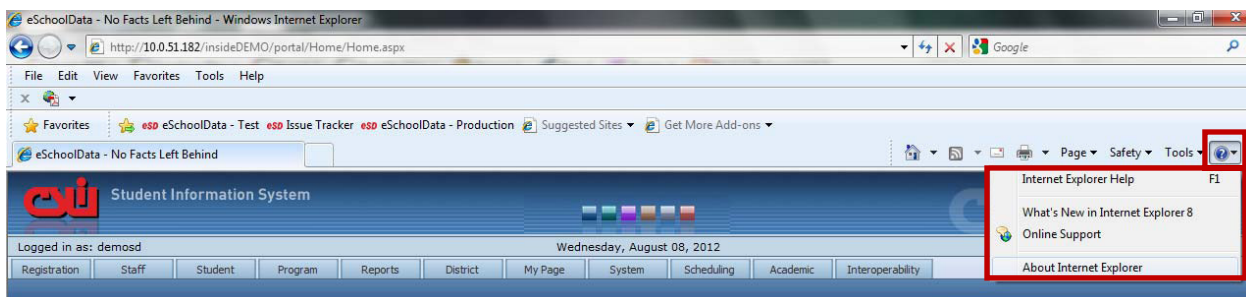
## WINDOWS INTERNET EXPLORER SETTINGS

If you are unsure which version of Microsoft Internet Explorer you are using, access the following: Open Internet Explorer® from the desktop. Click on **HELP** from the **INTERNET EXPLORER MENU > ABOUT INTERNET EXPLORER**

### IE7



### IE 8 or9



Microsoft® Internet Explorer® for Windows® should be Version 7.0 at a minimum with version 8 or 9 preferred. After the version has been verified, follow the steps outlined below to setup Internet Explorer to work best with the CSIU Student Information System.

Click on **TOOLS** from the Internet **EXPLORER MENU > INTERNET OPTIONS**.

**CSIU** CENTRAL SUSQUEHANNA INTERMEDIATE UNIT

File Edit View Favorites Tools Help

Microsoft Outlook Web Access eSchoolData - Login

Tools

- Reopen Last Browsing Session
- Pop-up Blocker
- Manage Add-ons
- Work Offline
- Compatibility View
- Compatibility View Settings
- Full Screen F11
- Toolbars
- Explorer Bars
- Developer Tools F12
- Suggested Sites
- Windows Messenger
- Diagnose Connection Problems...
- Internet Options**

**CSIU Student Information System**

District Administration - State Reporting - Census - Registration - Scheduling - Attendance - Teacher Grade book - Transcript and Grade Reporting - Parent Portal and much more.

The CSIU Student System provides a robust knowledge management platform to effectively handle a school district's information and administration requirements. Built on an enterprise-grade, service-oriented-architecture, CSIU a is a fully integrated system that also "plays well" with other systems. Whether your data exchange requirements entail publishing and/or subscribing to data elements utilizing a SIF model or whether you intend to utilize web-services, SSIS packages, or flat file data exchanges, the CSIU integration team is at your service to help you streamline these processes.

[Click here](#) for browser requirements.

The CSIU Student Information System is powered by eSchoolData, LLC - Copyright © 2001-2010 eSchoolData, LLC - Demo PA

### Microsoft® Internet Explorer® – General Settings

Internet Options

General Security Privacy Content Connections Programs Advanced

Home page

To create home page tabs, type each address on its own line.

https://web4.schoolport.org/plexus/portal/

Use current Use default Use blank

Browsing history

Delete temporary files, history, cookies, saved passwords, and web form information.

Delete browsing history on exit

Delete... Settings

Search

Change search defaults. Settings

Tabs

Change how webpages are displayed in tabs. Settings

Appearance

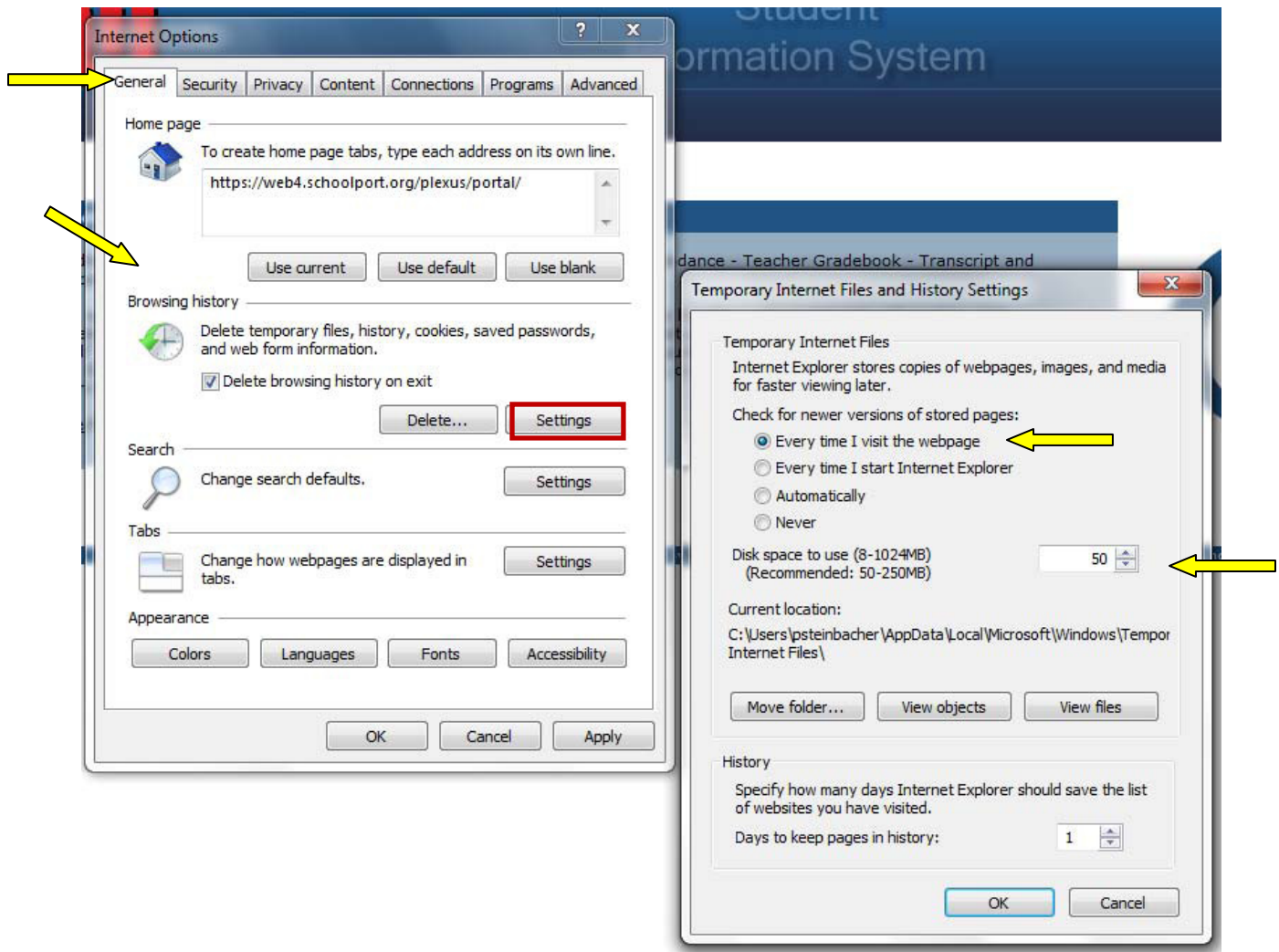
Colors Languages Fonts Accessibility

OK Cancel Apply

**General tab** - You may want to set your browser's default homepage to the CSIU Student Information System for even quicker access. To do this, click the 'Use Current' button and <https://web4.schoolport.org/plexus/portal> should appear in the text box.

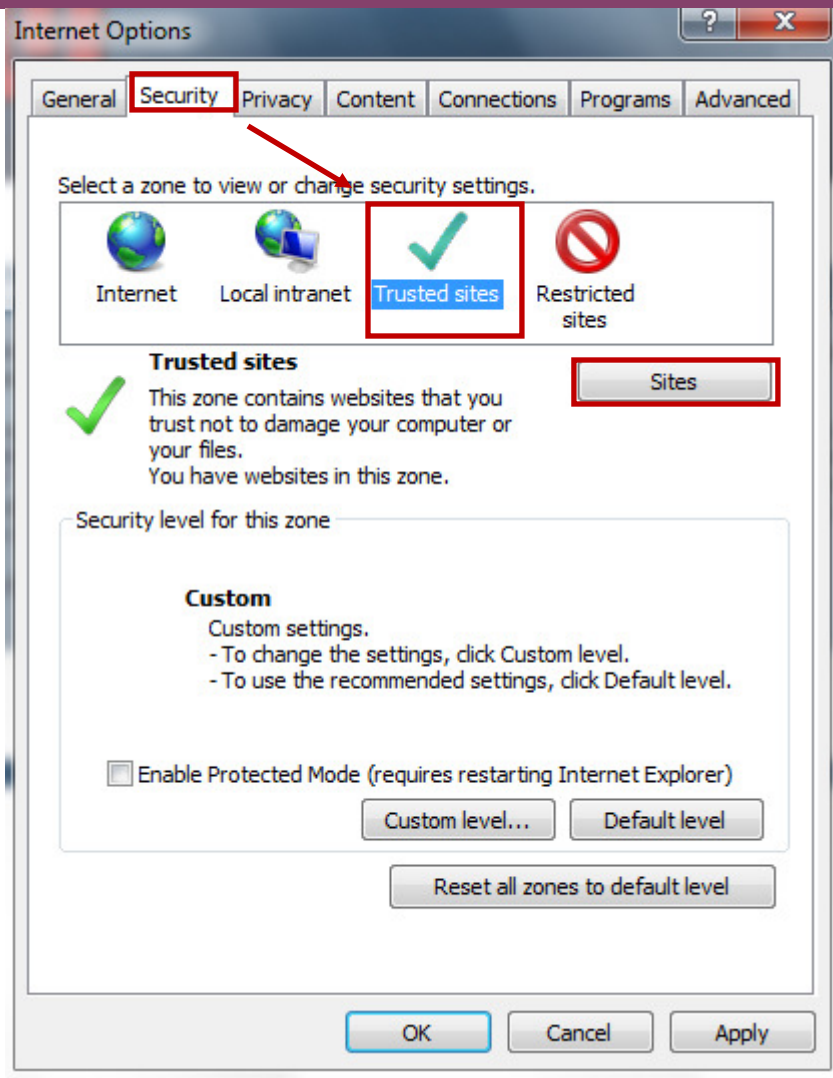
Still on the **General Tab**, under the Browsing history section, click on **Settings**.

Make sure that "**Every time I visit the webpage**" is selected and "**Disk space to use**" is set to **50mb**. Then click **OK**.

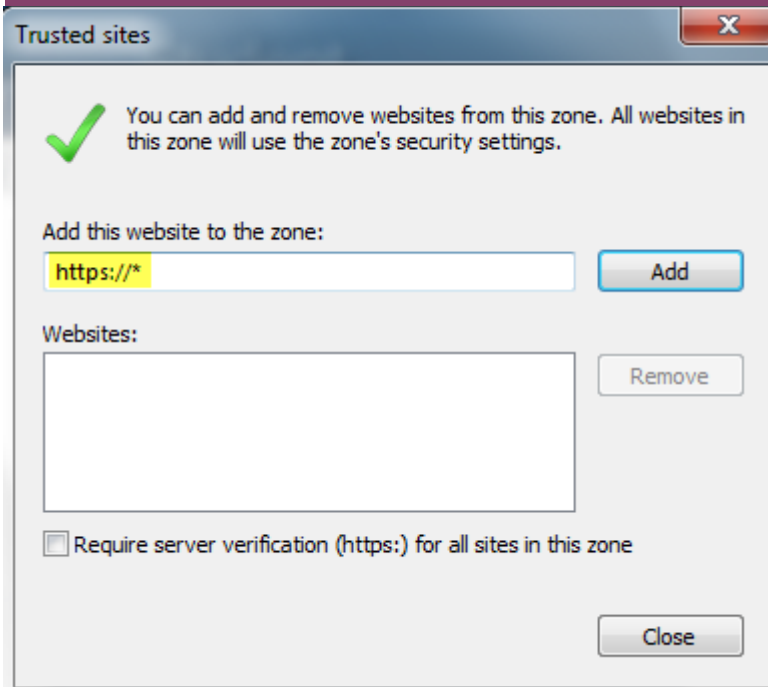


Next, click on the **Security Tab** then click on **Trusted Sites** and then click on the **Sites** button.

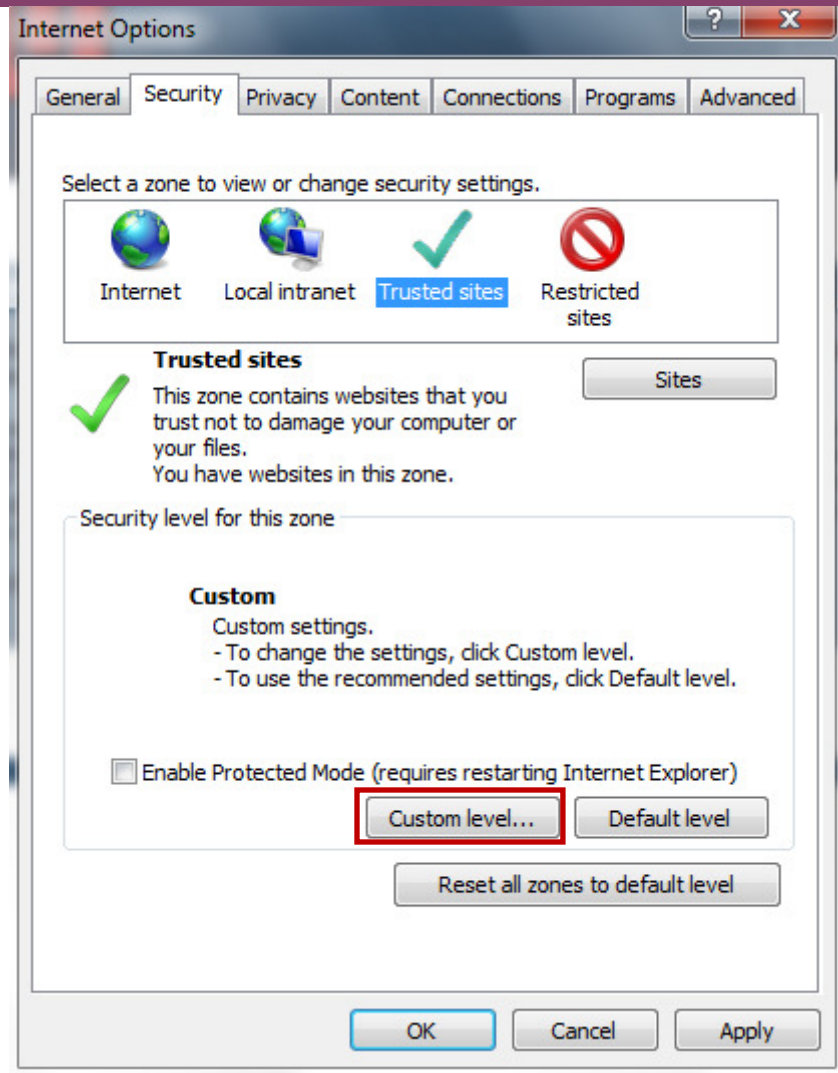
In the text box type in: [https://\\*](https://*), click **Add** then click **OK**. Check the box '**Require Severe Verification for all sites in this zone**'. Click **Close**.







Now, back on the **Security Tab**, click **Custom Level**.





After clicking on the Custom Level, set the following options:

1. **Downloads area:**

- Automatic prompting for file downloads - **enable**
- File download - **enable**

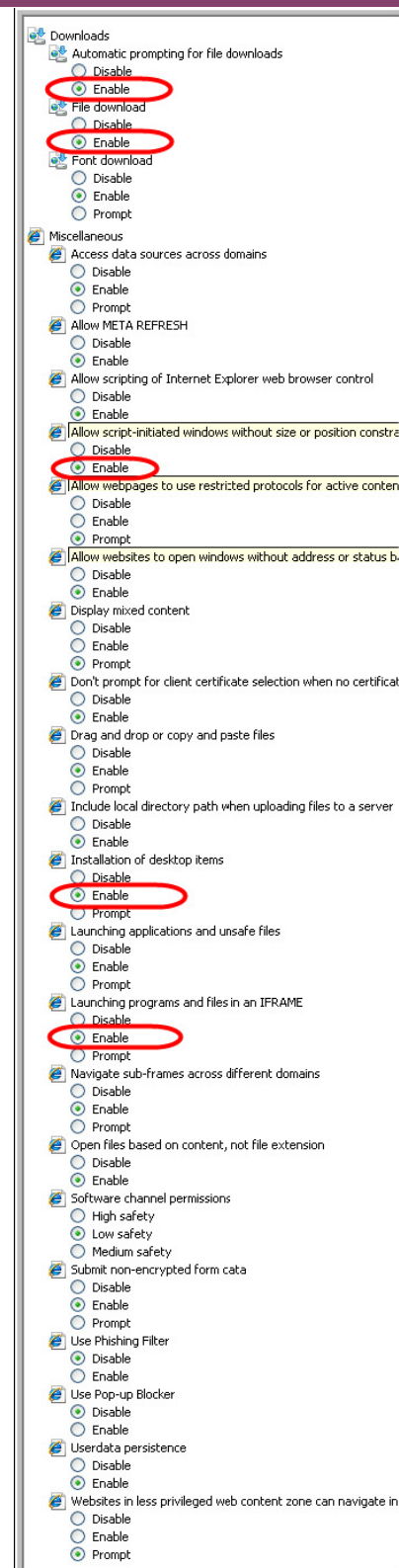
2. **Miscellaneous area:**

- Installation of Desktop items - **enable**
- Launching of Program and Files in IFRAME - **enable**
- Allow script-initiated windows without size or position constraints - **enable**

**NOTE:** This option must be ENABLED in order for the CSIU Student Information System window to come up in the correct size with scrollbars or any applicable functions.

- Use Pop-up Blocker - **disable**.

When completed, click **OK**.



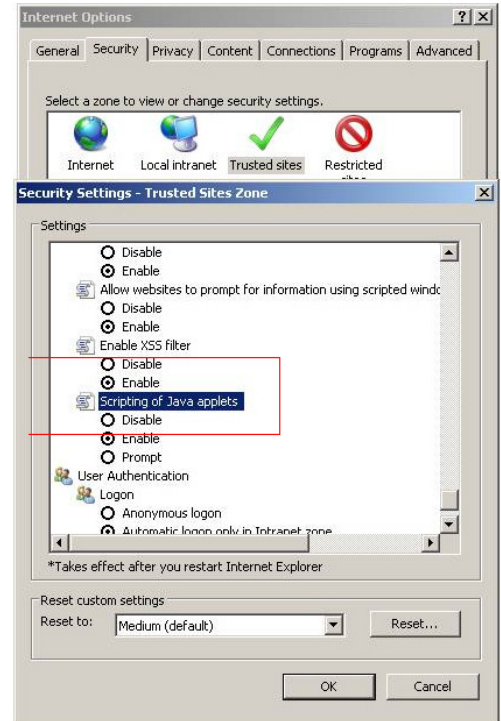




## Security

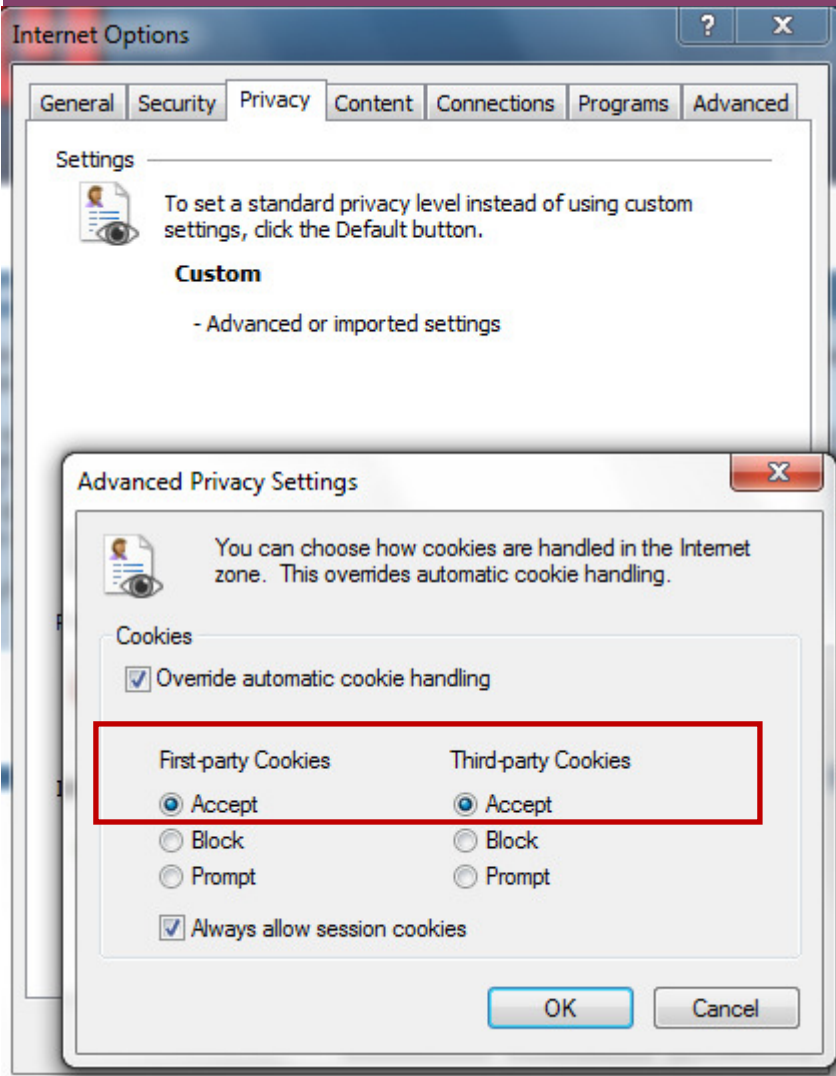
Trusted Sites > Customize:

Scripting of Java applets (this will help with teacher's Gradebook)



## Privacy

Internet Option > Privacy > Advanced: Override automatic cookies handling and verify Cookies for this page





## Advanced Tab

### Browsing area:

Disable script debugging (Internet Explorer) -checked

Disable script debugging (Other) - checked

Show Friendly HTTP error messages - uncheck

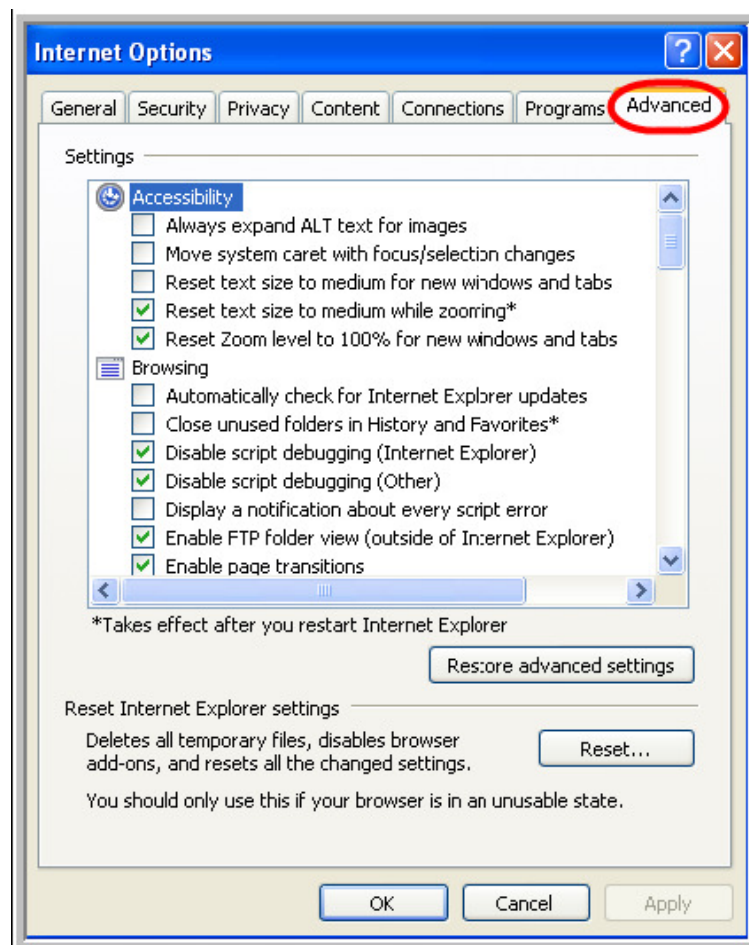
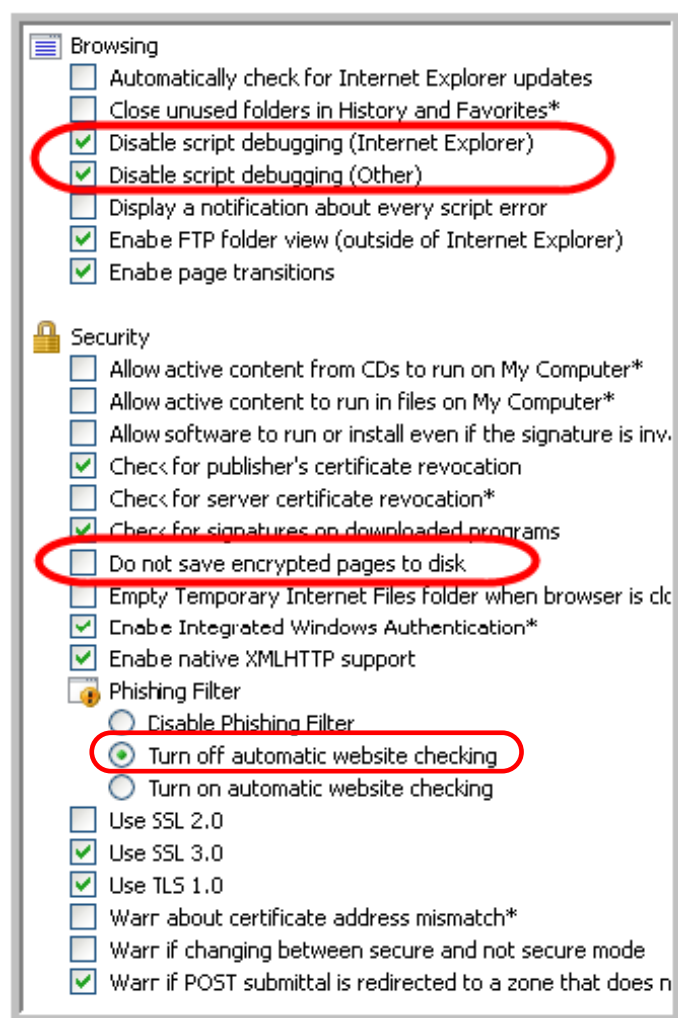
### Security area:

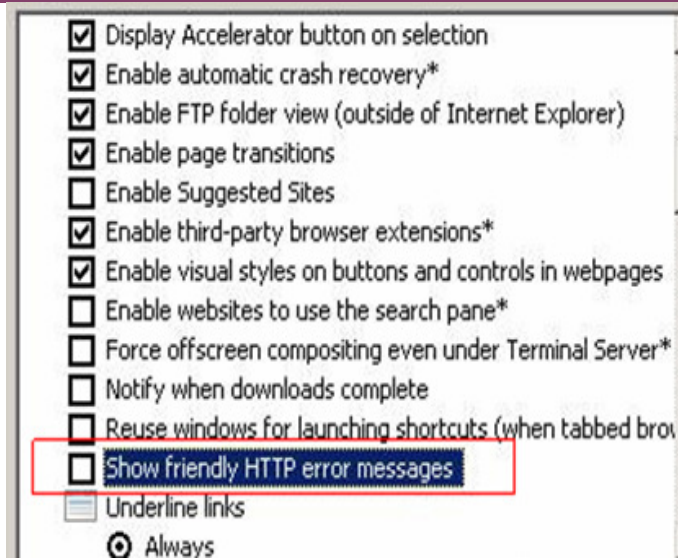
Do not save encrypted pages to disks - uncheck

### Phishing area:

Turn off automatic website checking -

Click **Apply** then **OK** button to proceed.

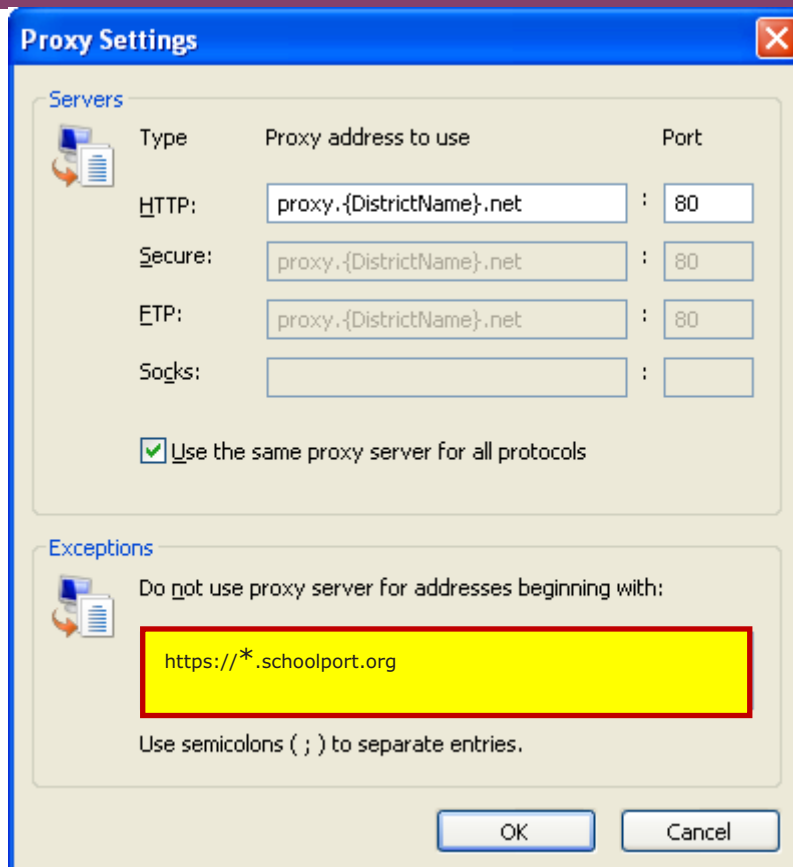




For the new settings to take effect, please close and reopen Microsoft Internet Explorer browser windows. Your browser settings are now configured for secure access to the CSIU Student Information System!

## BYPASS PROXY SERVERS AND FILTERING SYSTEMS

If a Proxy Server is being used, users may be able to gain faster access by bypassing the Proxy Server. If this option is made available by the network administrators at the district, users can add the entry [https://\\*.schoolport.org/](https://*.schoolport.org/) to the exception list. This setting allows users to go directly to the CSIU Student Information System website without being filtered, however this option is only available if the school network is configured to allow direct access to the Internet.



Most K-12 school districts are responsible for providing some form of Internet content filtering via an AUP (Acceptable Use Policy) on student accessible networks. If users are accessing the CSIU Student Information System from the same network (and the option to bypass the Proxy Server or Filtering system is not available), contact your network administrator. Additional network configuration will be required to support multi-user access in this environment.

## CREDENTIALS (USERNAMES AND PASSWORDS)

The System administrator will provide usernames and passwords for system access to district constituents. Depending on the access policy set by the district, passwords can be changed by users after they log into the system. This is advisable to do.